



Dr. Mahchid Namazi

Executive Director,
School of
Communication Disorders
and Deafness



KEAN

WORLD-CLASS EDUCATION

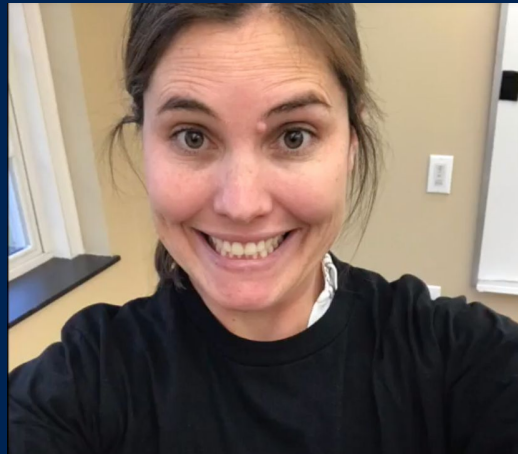


NWGC

School of
CDD

BA SLHS
MA SLP
SLPD
Minor SLHS
Minor ASL

Meet the Faculty



PROGRAM COORDINATORS:

Dr. JoAnne Cascia

Dr. Susan Mandel



MA SPEECH LANGUAGE PATHOLOGY



COUNCIL ON ACADEMIC ACCREDITATION



AMERICAN
SPEECH-LANGUAGE-
HEARING
ASSOCIATION

ACCREDITED | SPEECH-LANGUAGE PATHOLOGY

2200 Research Blvd., #310

Rockville, MD 20850

800-498-2071

301-296-5700

accreditation@asha.org

MA SLP

- 2 cohorts per year
- 57 credits
- Eight, 1.5 credit electives
- Two semesters in clinic (on-campus)
- Two semesters in externship
- Two semesters of thesis (research)
- Comprehensive exam

Application Requirements

- CSDCAS application
- Kean supplemental application
- GRE scores
- GPA 3.0 or higher required; 3.2 recommended
- Letters of recommendation
- Curriculum Vitae
- Two minute video
- Select applicants will be invited to campus for in-person interviews.


Foundation courses

- Disorders of Speech, Language and Communication
- Speech and Hearing Science
- Basic Audiology
- Anatomy and Physiology of the Ear and Speech Mechanism
- Early Speech and Language Development
- Phonetics
- Neuroscience for Speech and Hearing

Additional Requirement

- ASHA requires the following courses for certification. If they are not completed prior to beginning the graduate program, they must be added to your graduate curriculum
 - 1 course in biological science
 - 1 course in physical science (chemistry or physics)
 - 1 course in behavioral or social science
 - 1 course in statistics
- It is highly recommended that applicants have these courses completed prior to beginning their graduate studies.

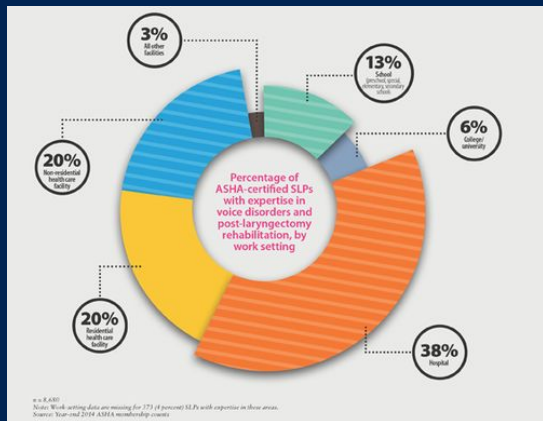
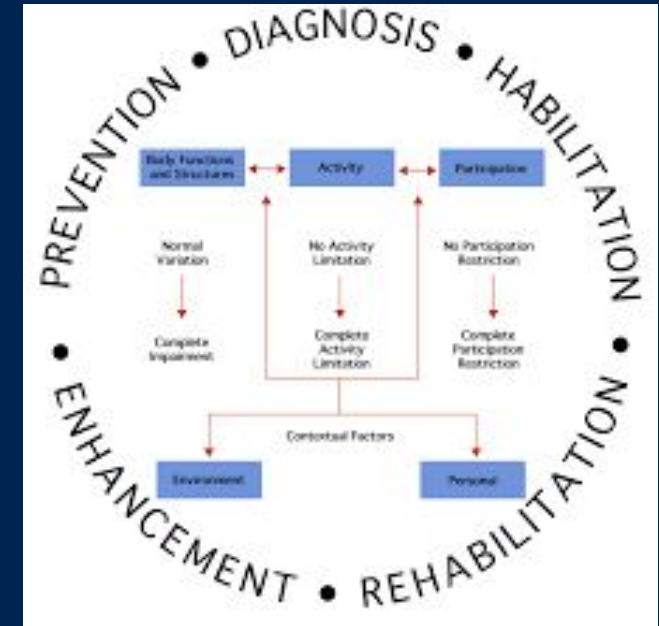
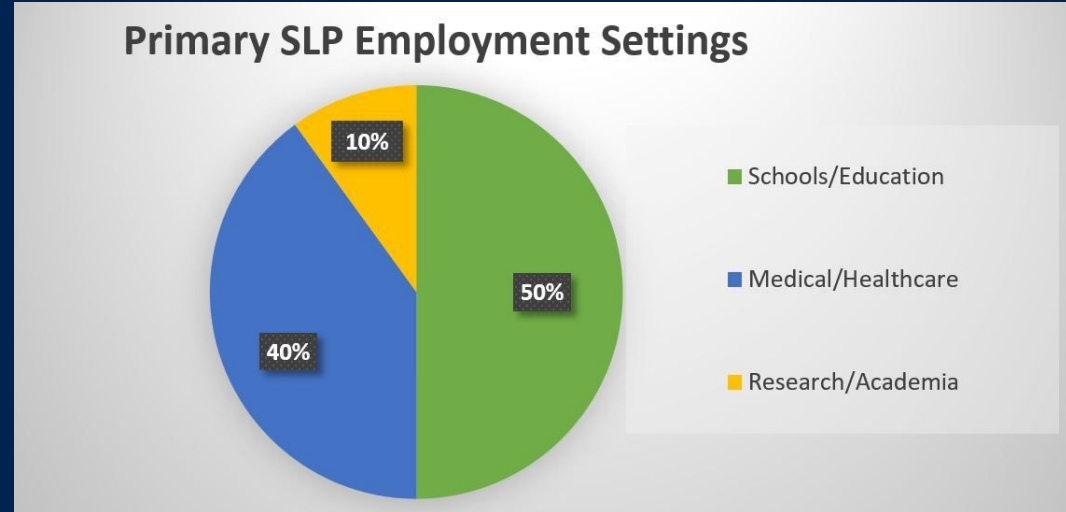
Pathway to Practice as an S/LP

- 
- **Master's Degree from accredited program**
(total > 75 credit hours, at least 36 at graduate level)
 - **Accumulation of 400 hours of supervised practicum**
(25 observation + 375 direct)
 - **Passing score on Praxis Exam = 162 (new scale)**
 - **Clinical Fellowship Year (36 weeks minimum)**
 - **Completion of Application for ASHA certification and Membership**



CAREER OPTIONS

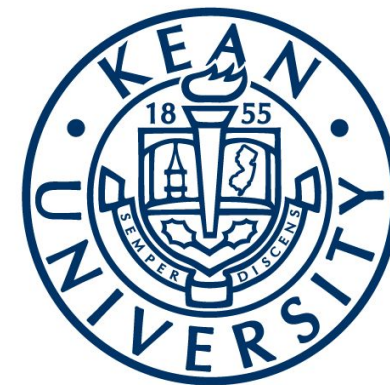




- Excellent job opportunities in speech-language pathology are expected to grow by 18 percent from 2016 to 2026, faster than the average for all occupations.
- Among the 100 best jobs of 2017



WHY KEAN ?



- Telepractice ready
- Multilingual/Multicultural emphasis
- Oldest program in the state
- Largest program in the state
- Only Autism specialization in NJ
- State of the art research & clinic spaces
- Faculty are licensed clinicians
- Small class sizes & CDD family
- Service Learning Opportunities



New in SLP!

"The program focuses on services for individuals with autism, especially those from underprivileged environments."

MAHCHID NAMAZI, PH.D



Some Unique Opportunities

- Intensive Clinical Aphasia Program (ICAP)
- Day of Bedsides
- Accent Modification Group at the YMCA
- Sensory Story time at the YMCA
- After School Social at a local school
- Workshops and Conferences

New in 2020 - Autism Specialization (First in the State)

- Coursework in:
 - Autism
 - Social Skills
 - Neurological underpinnings of ASD
 - Interprofessional collaboration in ASD
- Clinical experiences in ASD
- Master's thesis research with faculty specializing in ASD





KEAN

WORLD-CLASS EDUCATION



SPEECH LANGUAGE PATHOLOGY Doctorate (SLPD)

PROGRAM COORDINATOR

Dr. Sarah Patten

Why a clinical doctorate?

- To foster advanced and specialized practice
- For job parity on rehabilitation teams
- For career advancement
- Nationwide only six other clinical doctorates exist
- Kean is an ideal site for first clinical doctorate in the Northeast
- Strong MA clinical program
- Close ties with treatment sites locally and statewide
- Our diversity
- NWGC as a hub for graduate education in the health professions

Admission Requirements

- Master's in SLP
- ASHA certification (CCC-SLP)
- Minimum Master's GPA 3.2
- CV and three letters of recommendation
- Statement of goals and interests
- Interview

Program Highlights

- 33 credits, 6 continuous semesters
- Multicultural/multilingual emphasis
- Major and minor area chosen from:
 - Developmental language disorders
 - ASD & other neurodevelopmental disorders
 - Acquired language disorders in adults
 - Hearing impairment
 - Motor disorders including dysphagia

Requirements (cont'd)

- Ten required courses including:
 - Research design
 - Advanced statistics
- One elective course chosen from a related graduate program
- Comprehensive exam required at conclusion of curriculum



CAREER OPTIONS



Speech-Language Pathology Students Support
COVID-19 Patients

OUR CURRENT SLPD STUDENTS

SLPD class of 2019: Where are they now?







KEAN

WORLD-CLASS EDUCATION



PROGRAM COORDINATOR
Dr. Joanne Christodoulou

Pre-Professional program

Why a pre-professional sequence?

- To provide an academic background in speech, language, and hearing the opportunity to explore the field
- To complete the foundational courses that are required for application to a graduate program in SLP or audiology

Successful completion of this
sequence of courses does not ensure
acceptance into the MA-SLP program
or any other graduate program

Seven Foundational Courses

- CDD 2254: Phonetics
- CDD 2256: Early Speech and Language Development
- CDD 2260: Anatomy & Physiology of the Ear and Speech Mechanism
- CDD 3252 Speech, Language and Communication Disorders across the Lifespan
- CDD 3259: Basic Audiology
- CDD 3269: Neuroscience for Speech and Hearing
- CDD 3271: Speech and Hearing Science

How long does it take?

- You set the pace!
 - The 7 course sequence is offered in fall, spring & summer depending on enrollment & professor availability
 - As short as 1 year or as long as you need

Admission Requirements

- Through the Nathan Weiss Graduate College
- Proof of Bachelor's degree
- Minimum Bachelor's GPA 3.0
- March 1st for Fall and September 1st for Spring

Important Reminders

- Pre-professional students are required to maintain a 3.0 GPA
- SLP graduate programs are VERY competitive
- Students should plan schedules carefully and allow ample time for study
- Coursework is very rigorous

