

VIBRANT BOUNTY

Chinese Folk Art from the Shaanxi Region



KEAN UNIVERSITY

VIBRANT BOUNTY



Collection of New Years Prints, n.d., 10 1/4 x 11 1/4 x 2 inches, private collection. Photo: E.G. Schempf.



Pang Wei, *Drying Tobacco Leaves in the Open*, 1985-1991, tempera on paper, 23 x 28 3/8 inches, private collection. © Pang Wei. Photo: E.G. Schempf.



(Top) *Baby Tiger Shoes*, n.d., cotton, embroidery thread, 3 1/4 x 3 1/4 x 5 3/4 inches, private collection. Photo: E.G. Schempf. (Bottom) *Stuffed Rooster*, n.d., cotton, embroidery thread, straw filling, 10 3/4 x 10 1/2 x 5 1/2 inches, private collection. Photo: E.G. Schempf.



Homemade Baby's Quilt, n.d., cotton, embroidery thread, 32 3/4 x 34 inches, private collection. Photo: E.G. Schempf.



Zhijian Luo, *Rinsing Cloth in the River*, 1985-1991, tempera on paper, 34 3/4 x 24 1/4 inches, private collection. © Zhijian Luo. Photo: E.G. Schempf.

Vibrant Bounty: Chinese Folk Art from the Shaanxi Region — As brilliant as the petals of a lotus and as bold as a spring storm, these folk paintings and artifacts of rural China reveal a national spirit that is as charming as it is vital. By depicting scenes of labor within lavish pastoral settings, the paintings celebrate the farmers' unity amidst the immensity of nature. The artifacts in *Vibrant Bounty* reveal a humanity that aids us in understanding a people half a world away.

Vibrant Bounty: Chinese Folk Art from the Shaanxi Region invites visitors on a journey through Shaanxi Province, one of the cradles of Chinese civilization. The capital city, Xi'an, was once the Eastern terminus of ancient Silk Road, and is famous for its ancient ruins, most notably the Mausoleum of Qui Shi Huang and his Terracotta Army. In an area outside of the city's center lies Huxian (or Hu) County, where, since the 1950s, local artists have been producing objects similar to the 25 paintings and 14 objects found in *Vibrant Bounty*. This tradition has achieved great renown in China, culminating in the state Ministry of Culture awarding Huxian the honorary title of a "Village of Chinese Modern Folk Painting" in 1988.

These peasant, or farmer, paintings are closely related to the traditional Chinese arts of embroidery, batik (a fabric dyeing method), paper-cut, and wall painting. The artists use shui fen (paint powder and water—similar to gouache or tempera) on thick paper to create the paintings. While Huxian peasant paintings depict ordinary aspects of people's lives, the vibrant colors emanate from an animated atmosphere, and are only enriched by frequent hyperbole and moral connotations. Festivals, parades, the harvest, music, village traditions, farm animals, winter, kitchen work, and children are all celebrated in these paintings.

The artifacts included in this collection expose us further to Chinese rural life and they show, in detail, traditional Shaanxi customs. They range from children's clothing

and toys to New Year's prints and decorative household items, often embroidered with lucky figures and animals. Not only are they carefully handmade and beautiful, they also hold symbolic wishes for good luck, good marriage, and good health.

Both the art and the objects featured in this exhibition introduce us to a region of China, which, like the American Midwest, is dominated by agriculture and populated with working people. Through these peasant paintings and the artifacts which accompany them, we gain a greater understanding of the customs and culture of a people who, despite great distances, share with us essential similarities.

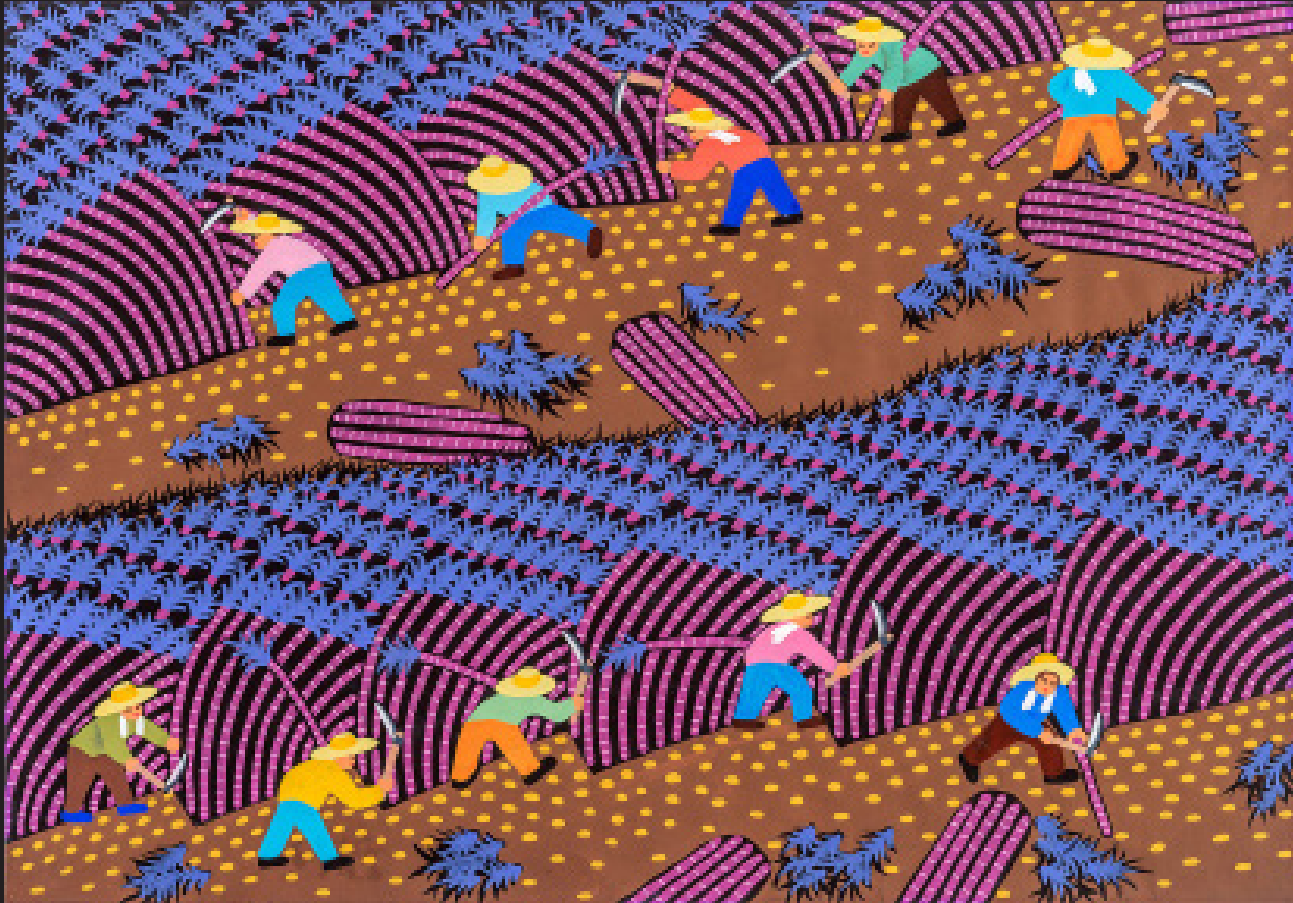
www.eusa.org/VibrantBounty



ExhibitsUSA

2018 Baltimore Avenue, Kansas City, Missouri 64108
800.473.EUSA (3872) ext. 209/208 MoreArt@maaa.org
www.eusa.org

TRAVELING EXHIBITION



Shengtao Zhao, *Harvesting Sugar Cane in the North*, 1985-1991, tempera on paper, 24 1/4 x 34 3/4 inches, private collection. © Shengtao Zhao. Photo: E.G. Schempf.

Curated and organized by: ExhibitsUSA, part of Mid-America Arts Alliance

Content: 25 paintings and 14 objects

Duration: 7-week display

Out-of-Region Rental Fee: \$3,000

In-Region Rental Fee: \$1,500 for venues hosting before July 1, 2017 and \$2,100 for venues hosting after July 1, 2017 (In-region states: Arkansas, Kansas, Missouri, Nebraska, Oklahoma, and Texas)

Shipping expense: Exhibitor is responsible for payment of outgoing shipping.

Programming Grant: In-region states are eligible for a \$1,000 Public Programming Grant from Mid-America Arts Alliance.

Security: L

Run. ft.: 200

Sq. Ft.: 100

Insurance: The exhibition is fully insured by ExhibitsUSA at no additional expense to you, both while installed and during transit.

DATES AVAILABLE

Vibrant Bounty is scheduled to begin touring June 2015 through May 2019. The dates below reflect 7-week exhibition periods. Dates are subject to change; please contact MoreArt@maaa.org or (800) 473-3872 x208/209 for current availability.

June 16–August 11
September 1–October 20
November 10–January 7
January 28–March 16
April 6–May 25

THE EXHIBITION IN YOUR GALLERY

ExhibitsUSA allows venues to customize the exhibition for your space. You may wish to enhance the exhibition content with additional objects from your collection or community resources. You may also wish to edit objects from the exhibition due to space restrictions or content. If your institution plans to augment or edit the exhibition you are hosting, please notify us of your changes so that we may better serve your needs.

SUPPORT MATERIALS AND SERVICES

When you host an EUSA exhibition, you will receive a range of support materials to present the exhibition to your community.

THESE INCLUDE:

- A publicity packet with digital images and logos, a sample press release, and public service announcement.

- An educational programming guide with lesson plans for teachers, information for docents, and a bibliography of books, videos, and hands-on materials.

- Interpretive labeling, written and designed by ExhibitsUSA, available in printable formats on disk.

- Catalogues, brochures or reproducible gallery guides, and text panels.

- A registrar's packet with the final checklist, checklist receipt, packing list, and clear instructions for installing and de-installing the exhibition.

- A condition report with detailed photographs and descriptions.

- Custom-designed crates for easy handling and maximum protection, along with photographs and instructions for proper packing



Zhiguo Luo
Dwelling
c. 1985-1991
Tempera on paper
31 x 20 inches
Private collection











進門

獅

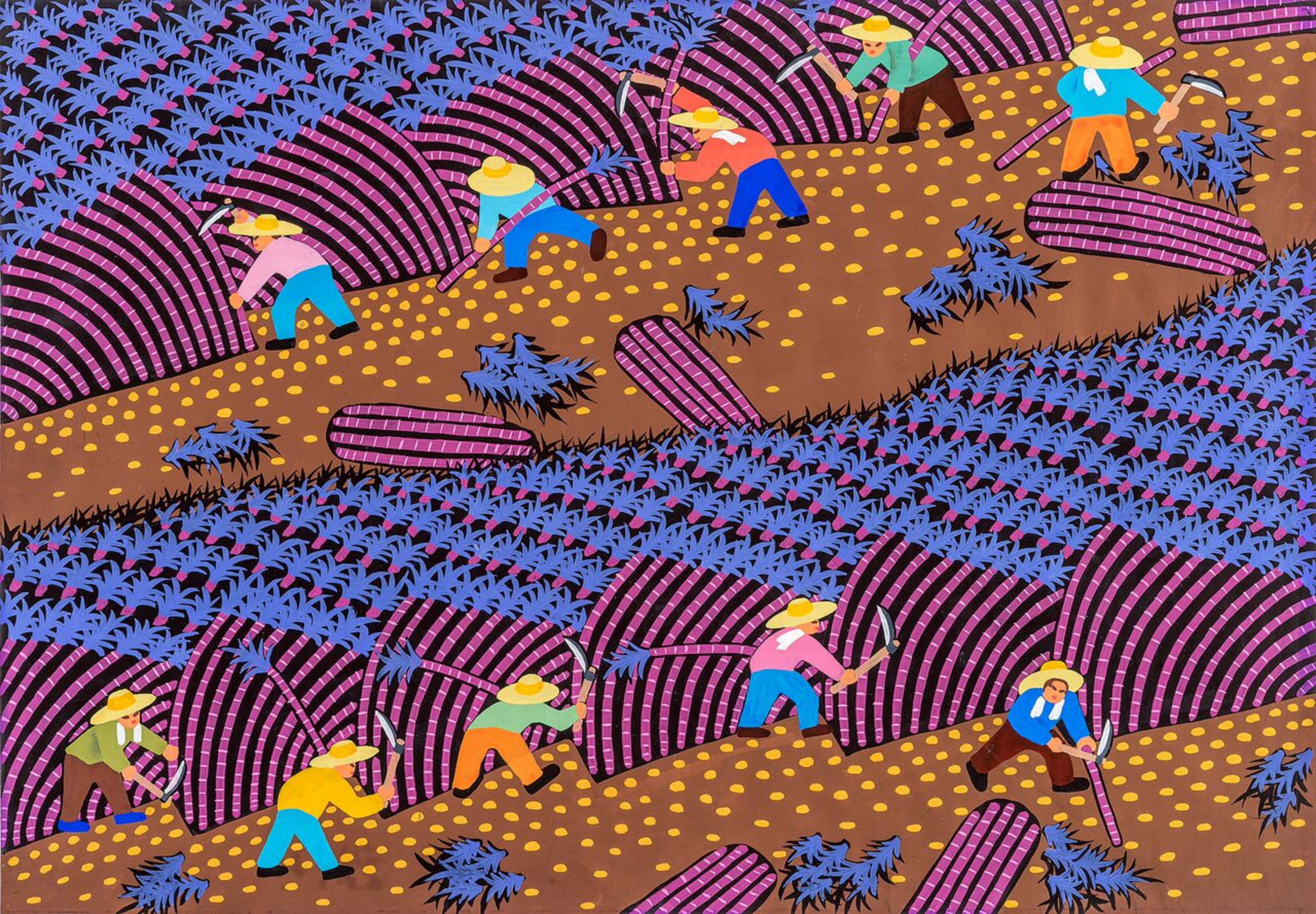
童























KARL AND HELEN BURGER GALLERY

VIBRANT BOUNTY

Chinese Folk Art from the Shaanxi Region

Reception:

Thursday, February 15th, 2018; 3:30 - 4:30pm

Open Until March 16th, 2018